

## \$297,000 - 203 9908 84 Avenue, Edmonton

MLS® #E4423122

**\$297,000**

2 Bedroom, 2.00 Bathroom, 857 sqft

Condo / Townhouse on 0.00 Acres

Strathcona, Edmonton, AB

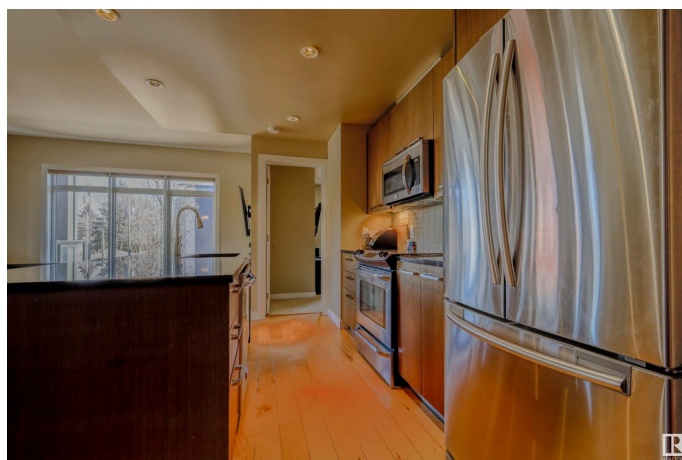
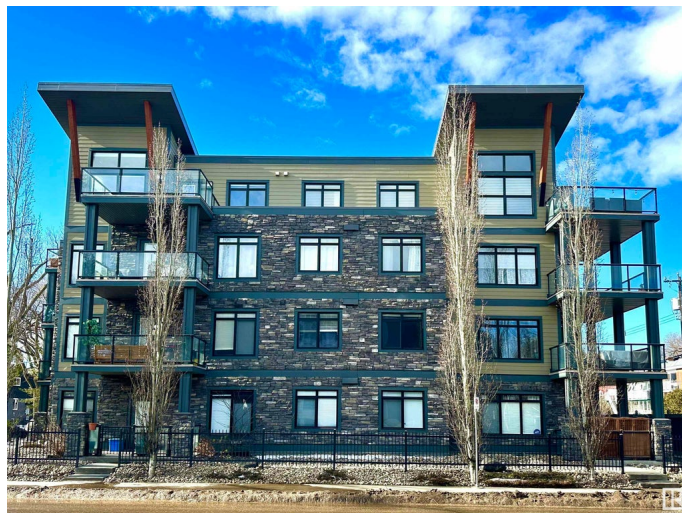
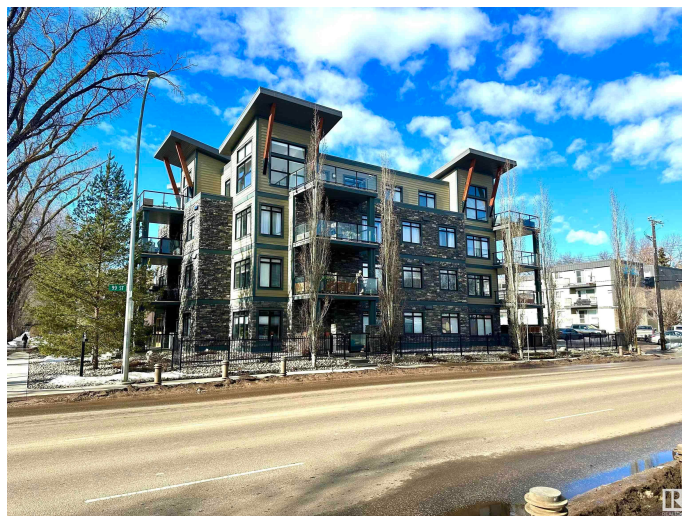
This stunning condo is ideally located just off Whyte Ave, offering a prime spot close to the UofA, River Valley, shopping, dining, and all amenities! With 857 SF of modern living space, this stylish urban home includes 2 bedrooms and 2 full bathrooms. Expansive windows in the living room flood the open-concept floor plan with natural light. The kitchen is outfitted with stainless steel appliances, plenty of cupboard space, and a spacious island with bar seating perfect for entertaining while seamlessly connecting to the dining and living areas. The primary bedroom features a walk-through closet with built-in organizers and a private 4-piece ensuite. The second BR includes generous built-in shelving for added convenience. Additional highlights include a full bathroom, in-suite laundry, and a large private balcony with a BBQ hookup. With the added bonus of an underground parking space, this condo offers the perfect blend of style, comfort, and an unbeatable location deal for first time buyers or investors.

Built in 2010

### Essential Information

MLS® # E4423122

Price \$297,000



Bedrooms	2
Bathrooms	2.00
Full Baths	2
Square Footage	857
Acres	0.00
Year Built	2010
Type	Condo / Townhouse
Sub-Type	Lowrise Apartment
Style	Single Level Apartment
Status	Active

### Community Information

Address	203 9908 84 Avenue
Area	Edmonton
Subdivision	Strathcona
City	Edmonton
County	ALBERTA
Province	AB
Postal Code	T6E 2G3

### Amenities

Amenities	Ceiling 9 ft., Patio, Secured Parking, Security Door, Sprinkler System-Fire, Storage Cage
Parking Spaces	1
Parking	Heated, Underground

### Interior

Interior Features	ensuite bathroom
Appliances	Dishwasher-Built-In, Hood Fan, Oven-Microwave, Refrigerator, Stacked Washer/Dryer, Stove-Electric, Window Coverings, Curtains and Blinds
Heating	Heat Pump, Natural Gas
# of Stories	4
Stories	1
Has Basement	Yes
Basement	None, No Basement

### Exterior

Exterior	Wood, Brick, Composition, Stone
Exterior Features	Playground Nearby, Public Transportation, Schools, Shopping Nearby

Roof	Tar & Gravel
Construction	Wood, Brick, Composition, Stone
Foundation	Concrete Perimeter

**Additional Information**

Date Listed	February 27th, 2025
Days on Market	51
Zoning	Zone 15
Condo Fee	\$671

DATA IS DEEMED RELIABLE BUT IS NOT GUARANTEED ACCURATE BY THE REALTORS® ASSOCIATION OF EDMONTON. COPYRIGHT 2025 BY THE REALTORS® ASSOCIATION OF EDMONTON. ALL RIGHTS RESERVED.Trademarks are owned or controlled by the Canadian Real Estate Association (CREA) and identify real estate professionals who are members of CREA (REALTOR®, REALTORS®) and/or the quality of services they provide (MLS®, Multiple Listing Service®)

Listing information last updated on April 19th, 2025 at 5:32pm MDT