

\$429,900 - 3 57a Erin Ridge Drive, St. Albert

MLS® #E4424536

\$429,900

3 Bedroom, 3.00 Bathroom, 1,214 sqft
Condo / Townhouse on 0.00 Acres

Erin Ridge, St. Albert, AB

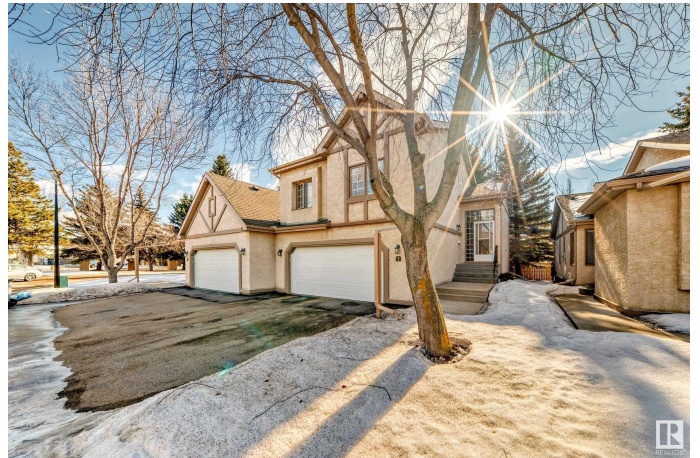
Sought after 45+ complex in Erin Ridge - Edgewood Estates - Former Show Suite - Newly renovated, END unit. Loads of natural light, double garage attached. Air conditioned. NEW vinyl plank flooring throughout, New Carpet and New Paint...Step into this well kept home with large PRIVATE balcony for your summer bbq's - surrounded by trees and crank awning. Open concept, spacious Brand New Kitchen and Stainless Steel Appliances with Formal Dining Room and huge window. Curl up in the living room with gas fireplace, vaulted ceiling and balcony doors. The Primary Bedroom has a walk through closet with 4 piece ensuite - AND Jacuzzi tub! Second bedroom and main 4 piece bath and laundry is finish off this level. The lower level you will find access to your oversized insulated and drywalled garage, 4 piece bathroom, 3rd bedroom and family room with plush carpet. This home also comes complete with built-in vacuum system. Close to the entrance, close to schools and shopping and public transportation.

Built in 1992

Essential Information

MLS® # E4424536

Price \$429,900



Bedrooms	3
Bathrooms	3.00
Full Baths	3
Square Footage	1,214
Acres	0.00
Year Built	1992
Type	Condo / Townhouse
Sub-Type	Townhouse
Style	4 Level Split
Status	Active

Community Information

Address	3 57a Erin Ridge Drive
Area	St. Albert
Subdivision	Erin Ridge
City	St. Albert
County	ALBERTA
Province	AB
Postal Code	T8N 6G1

Amenities

Amenities	Air Conditioner, Deck, Detectors Smoke, Front Porch, No Animal Home, No Smoking Home, Parking-Visitor, Vaulted Ceiling, See Remarks, Natural Gas BBQ Hookup
Parking Spaces	4
Parking	Double Garage Attached

Interior

Interior Features	ensuite bathroom
Appliances	Air Conditioning-Central, Dishwasher-Built-In, Dryer, Microwave Hood Fan, Stove-Electric, Washer, Window Coverings, See Remarks, Refrigerators-Two
Heating	Forced Air-1, Natural Gas
Fireplace	Yes
Fireplaces	Corner, Mantel
Stories	4
Has Basement	Yes
Basement	Full, Finished

Exterior

Exterior	Wood, Stucco
Exterior Features	Cul-De-Sac, Golf Nearby, Landscaped, Low Maintenance Landscape, Park/Reserve, Playground Nearby, Private Setting, Public Swimming Pool, Public Transportation, Shopping Nearby
Roof	Asphalt Shingles
Construction	Wood, Stucco
Foundation	Concrete Perimeter

School Information

Elementary	Lois E Hole Elementary
Middle	Lorne Akins Junior high
High	Paul Kane High School

Additional Information

Date Listed	March 7th, 2025
Days on Market	32
Zoning	Zone 24
Condo Fee	\$460

DATA IS DEEMED RELIABLE BUT IS NOT GUARANTEED ACCURATE BY THE REALTORS® ASSOCIATION OF EDMONTON. COPYRIGHT 2025 BY THE REALTORS® ASSOCIATION OF EDMONTON. ALL RIGHTS RESERVED. Trademarks are owned or controlled by the Canadian Real Estate Association (CREA) and identify real estate professionals who are members of CREA (REALTOR®, REALTORS®) and/or the quality of services they provide (MLS®, Multiple Listing Service®)

Listing information last updated on April 8th, 2025 at 8:02am MDT