

\$525,000 - 4930 27a Avenue, Edmonton

MLS® #E4427460

\$525,000

4 Bedroom, 4.50 Bathroom, 1,914 sqft
Single Family on 0.00 Acres

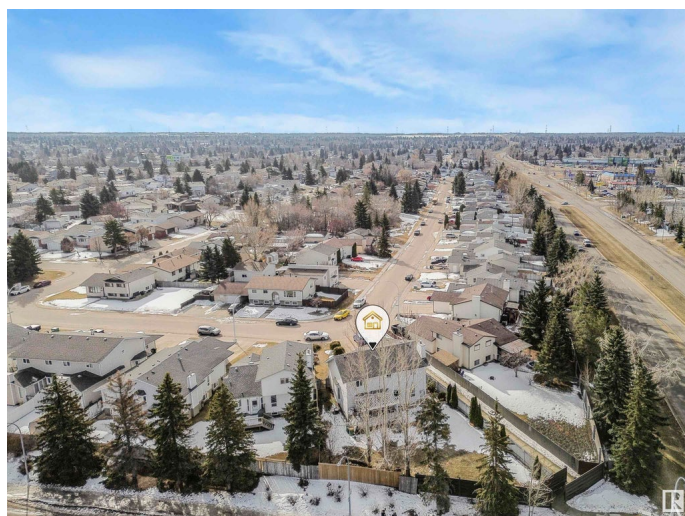
Weinlos, Edmonton, AB

Opportunity awaits at 4930 27A Ave NW, a two-story home in a well-established Southeast Edmonton neighborhood. This spacious property features four bedrooms, three full bathrooms, and a half bath, offering plenty of space for a growing family. The main floor includes a generous living area, a functional kitchen with ample storage, and a dining space with access to the backyard. Upstairs, the primary bedroom boasts a 4-piece ensuite, while a secondary bedroom includes its own private 2-piece ensuite for added convenience. Two additional bedrooms and another full bathroom complete the upper level. The backyard provides plenty of outdoor space, and the double attached garage adds practicality. Conveniently located near parks, schools, shopping, public transit, and major roadways, this home is a great opportunity in a desirable location.

Built in 1988

Essential Information

| | |
|------------|-----------|
| MLS® # | E4427460 |
| Price | \$525,000 |
| Bedrooms | 4 |
| Bathrooms | 4.50 |
| Full Baths | 4 |
| Half Baths | 1 |



| | |
|----------------|------------------------|
| Square Footage | 1,914 |
| Acres | 0.00 |
| Year Built | 1988 |
| Type | Single Family |
| Sub-Type | Detached Single Family |
| Style | 2 Storey |
| Status | Active |

Community Information

| | |
|-------------|-----------------|
| Address | 4930 27a Avenue |
| Area | Edmonton |
| Subdivision | Weinlos |
| City | Edmonton |
| County | ALBERTA |
| Province | AB |
| Postal Code | T6L 6B3 |

Amenities

| | |
|-----------|------------------------|
| Amenities | See Remarks |
| Parking | Double Garage Attached |

Interior

| | |
|-------------------|---|
| Interior Features | ensuite bathroom |
| Appliances | Dishwasher-Built-In, Hood Fan, Refrigerator, Stove-Electric, Washer, Window Coverings |
| Heating | Forced Air-1, Natural Gas |
| Stories | 3 |
| Has Basement | Yes |
| Basement | Full, Finished |

Exterior

| | |
|-------------------|--------------------|
| Exterior | Wood, Vinyl |
| Exterior Features | See Remarks |
| Roof | Asphalt Shingles |
| Construction | Wood, Vinyl |
| Foundation | Concrete Perimeter |

Additional Information

| | |
|-------------|------------------|
| Date Listed | March 26th, 2025 |
|-------------|------------------|

Days on Market 10

Zoning Zone 29

DATA IS DEEMED RELIABLE BUT IS NOT GUARANTEED ACCURATE BY THE REALTORS® ASSOCIATION OF EDMONTON. COPYRIGHT 2025 BY THE REALTORS® ASSOCIATION OF EDMONTON. ALL RIGHTS RESERVED. Trademarks are owned or controlled by the Canadian Real Estate Association (CREA) and identify real estate professionals who are members of CREA (REALTOR®, REALTORS®) and/or the quality of services they provide (MLS®, Multiple Listing Service®)

Listing information last updated on April 5th, 2025 at 4:32am MDT