

\$562,300 - 9833 68 Avenue, Edmonton

MLS® #E4429279

\$562,300

5 Bedroom, 2.00 Bathroom, 1,206 sqft

Single Family on 0.00 Acres

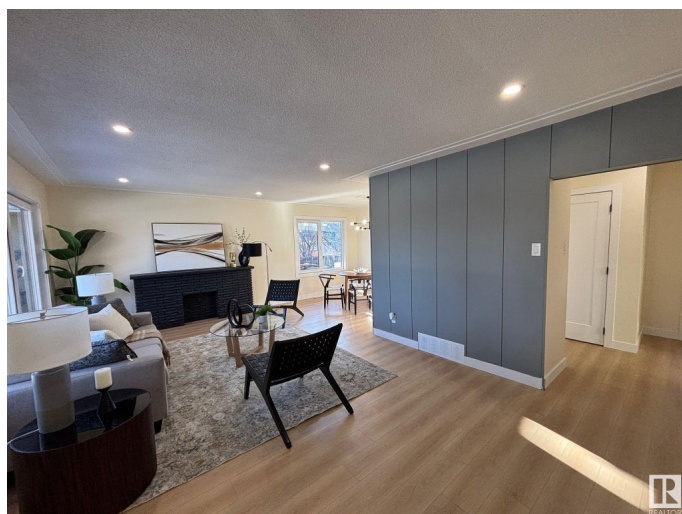
Hazeldean, Edmonton, AB

STEPS FROM MILL CREEK RAVINE and HAPPY BEER STREET—your new lifestyle starts HERE. Hike, bike, or stroll the RAVINE TRAILS, grab a pint at local breweries, or sip a latte at one of the nearby caf  s. Hazeldean is a hidden gem with a strong COMMUNITY LEAGUE, parks, playgrounds, and quick access to Whyte Ave. This RENOVATED 5-BED, 2-BATH home has a SEPARATE ENTRANCE to a bright in-law suite. Inside: OPEN-CONCEPT layout, custom cabinets, QUARTZ, pot lights, and new German tilt & turn windows. Massive primary, DOUBLE GARAGE, fenced yard, and exterior UPGRADES in progress. Live where the good vibes are.

Built in 1956

Essential Information

| | |
|----------------|---------------|
| MLS® # | E4429279 |
| Price | \$562,300 |
| Bedrooms | 5 |
| Bathrooms | 2.00 |
| Full Baths | 2 |
| Square Footage | 1,206 |
| Acres | 0.00 |
| Year Built | 1956 |
| Type | Single Family |



| | |
|----------|------------------------|
| Sub-Type | Detached Single Family |
| Style | Raised Bungalow |
| Status | Active |

Community Information

| | |
|-------------|----------------|
| Address | 9833 68 Avenue |
| Area | Edmonton |
| Subdivision | Hazeldean |
| City | Edmonton |
| County | ALBERTA |
| Province | AB |
| Postal Code | T6E 0R4 |

Amenities

| | |
|----------------|------------------------|
| Amenities | See Remarks |
| Parking Spaces | 4 |
| Parking | Double Garage Detached |

Interior

| | |
|--------------|---|
| Appliances | Dryer, Garage Opener, Hood Fan, Washer, Refrigerators-Two, Stoves-Two |
| Heating | Forced Air-1, Natural Gas |
| Stories | 2 |
| Has Basement | Yes |
| Basement | Full, Finished |

Exterior

| | |
|-------------------|---|
| Exterior | Wood, Stucco |
| Exterior Features | Back Lane, Fenced, Playground Nearby, Schools, Shopping Nearby, See Remarks |
| Roof | Asphalt Shingles |
| Construction | Wood, Stucco |
| Foundation | Concrete Perimeter |

Additional Information

| | |
|----------------|-----------------|
| Date Listed | April 5th, 2025 |
| Days on Market | 12 |
| Zoning | Zone 17 |

DATA IS DEEMED RELIABLE BUT IS NOT GUARANTEED ACCURATE BY THE REALTORS® ASSOCIATION OF EDMONTON. COPYRIGHT 2025 BY THE REALTORS® ASSOCIATION OF EDMONTON. ALL RIGHTS

RESERVED.Trademarks are owned or controlled by the Canadian Real Estate Association (CREA) and identify real estate professionals who are members of CREA (REALTOR®, REALTORS®) and/or the quality of services they provide (MLS®, Multiple Listing Service®)

Listing information last updated on April 17th, 2025 at 10:02am MDT