

Courtesy Of Aldo Esposito Of Century 21 Masters

## \$235,000 - 21 290 Spruce Ridge Road, Spruce Grove

MLS® #E4429287

**\$235,000**

3 Bedroom, 1.50 Bathroom, 1,071 sqft  
Condo / Townhouse on 0.00 Acres

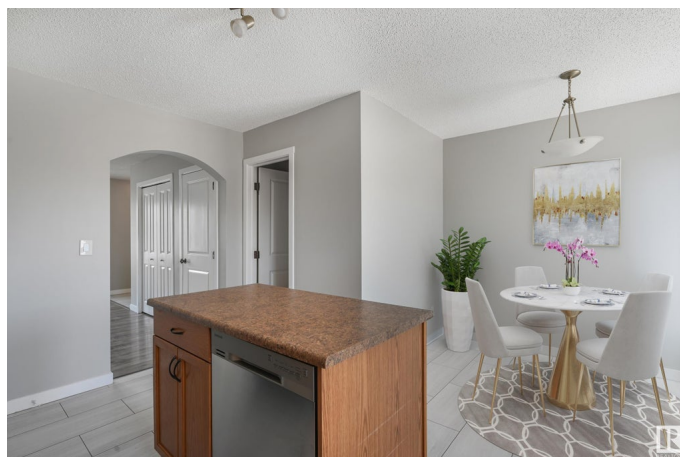
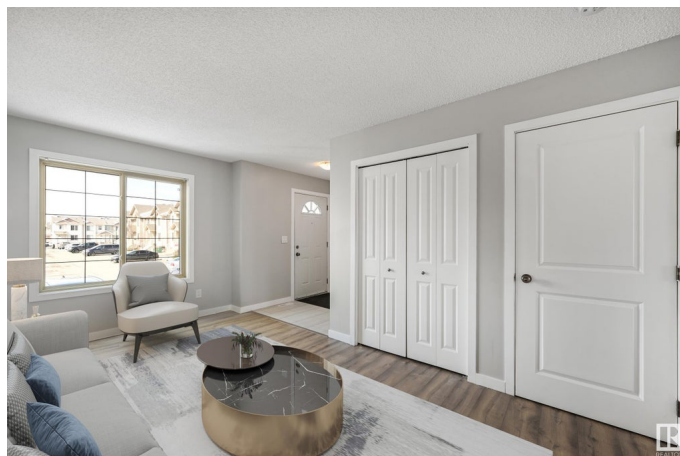
Spruce Ridge, Spruce Grove, AB

Welcome to this renovated 3 bedroom home in the heart of Spruce Grove! This townhome has a rare opportunity to add a future 4th basement bedroom! Recent updates include Brand New Paint, Vinyl Plank Flooring and Vinyl Tile! You'll love the bright and airy feel of the main floor with a spacious kitchen, plenty of storage, pantry and great island. Upstairs has 3 bedrooms including a great master with walk in closet. Your basement is perfect for a future 4th bedroom and bonus room. Enjoy life in this prime location - steps to shopping, school and transit! Welcome home!

Built in 2007

### Essential Information

MLS® #	E4429287
Price	\$235,000
Bedrooms	3
Bathrooms	1.50
Full Baths	1
Half Baths	1
Square Footage	1,071
Acres	0.00
Year Built	2007
Type	Condo / Townhouse
Sub-Type	Townhouse
Style	2 Storey



Status Active

### Community Information

Address 21 290 Spruce Ridge Road  
Area Spruce Grove  
Subdivision Spruce Ridge  
City Spruce Grove  
County ALBERTA  
Province AB  
Postal Code T7X 0C4

### Amenities

Amenities See Remarks  
Parking Stall

### Interior

Appliances Dishwasher-Built-In, Hood Fan, Refrigerator, Stove-Electric  
Heating Forced Air-1, Natural Gas  
Stories 2  
Has Basement Yes  
Basement Full, Unfinished

### Exterior

Exterior Wood, Vinyl  
Exterior Features See Remarks  
Roof Asphalt Shingles  
Construction Wood, Vinyl  
Foundation Concrete Perimeter

### Additional Information

Date Listed April 5th, 2025  
Days on Market 14  
Zoning Zone 91  
Condo Fee \$340

DATA IS DEEMED RELIABLE BUT IS NOT GUARANTEED ACCURATE BY THE REALTORS® ASSOCIATION OF EDMONTON. COPYRIGHT 2025 BY THE REALTORS® ASSOCIATION OF EDMONTON. ALL RIGHTS RESERVED. Trademarks are owned or controlled by the Canadian Real Estate Association (CREA) and identify real estate professionals who are members of CREA (REALTOR®, REALTORS®) and/or the quality of services they provide (MLS®, Multiple Listing Service®)

Listing information last updated on April 19th, 2025 at 12:02pm MDT