

\$510,000 - 45 Lorne Crescent, St. Albert

MLS® #E4429630

\$510,000

5 Bedroom, 3.00 Bathroom, 1,394 sqft

Single Family on 0.00 Acres

Lacombe Park, St. Albert, AB

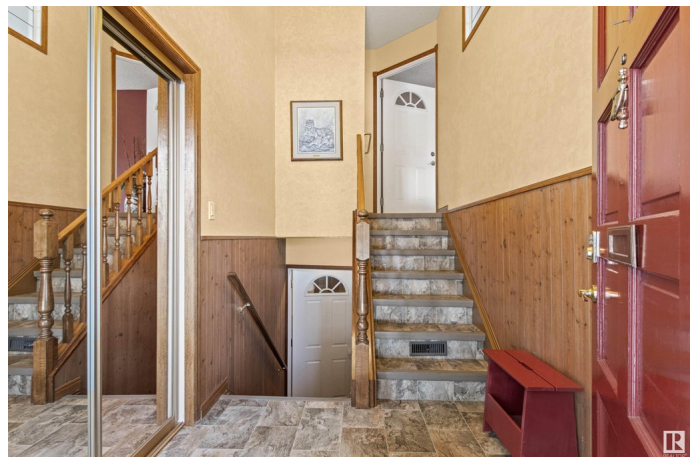
Wonderful Lacombe Park East Burkholtz built 1393 sq ft GENERATIONAL HOME OPPORTUNITY, with complete 2 bedroom in law suite down, private inside entrance too!. Huge RV parking plus 3 vehicle parking on the driveway. All situated on a pie shaped lot. The inside has been carefully maintained over the years. Vinyl windows as well. This is a 5 bedroom home, 3 up and 2 down. 3 full size bathrooms. 2 beautiful real brick feature fireplaces, 1 wood burning up, one with gas insert down. Patio door from the kitchen to a covered cedar deck and leading to a lower one. Pride of ownership shows in the detail to the meticulous landscaping complete with waterfall, Led lighting, fruit trees and shrubs and outside getaway areas to entertain with front courtyard and the extra wide back yard. This bilevel plan offers an amazing size area down, complete with a spacious 2nd kitchen, huge family room, 4 pce bath and 2 bedrooms. Extra access to the garage here as well. Walking distance to shopping, Liberton park and much more

Built in 1981

Essential Information

MLS® # E4429630

Price \$510,000



Bedrooms	5
Bathrooms	3.00
Full Baths	3
Square Footage	1,394
Acres	0.00
Year Built	1981
Type	Single Family
Sub-Type	Detached Single Family
Style	Bi-Level
Status	Active

Community Information

Address	45 Lorne Crescent
Area	St. Albert
Subdivision	Lacombe Park
City	St. Albert
County	ALBERTA
Province	AB
Postal Code	T8N 3R5

Amenities

Amenities	Deck, Fire Pit, Gazebo, No Smoking Home, R.V. Storage, Vinyl Windows, See Remarks
Parking Spaces	5
Parking	Double Garage Attached, Insulated, RV Parking, See Remarks

Interior

Interior Features	ensuite bathroom
Appliances	Dishwasher-Built-In, Garage Control, Garage Opener, Garburator, Vacuum System Attachments, Window Coverings, Dryer-Two, Refrigerators-Two, Stoves-Two, Washers-Two, Microwave Hood Fan-Two
Heating	Forced Air-1, Natural Gas
Fireplace	Yes
Fireplaces	Brick Facing, Insert, See Remarks
Stories	2
Has Basement	Yes
Basement	Full, Finished

Exterior

Exterior	Wood, Brick, Vinyl
Exterior Features	Fenced, Fruit Trees/Shrubs, Landscaped, Playground Nearby, Public Transportation, Schools, Shopping Nearby, Treed Lot, See Remarks
Roof	Asphalt Shingles
Construction	Wood, Brick, Vinyl
Foundation	Concrete Perimeter

Additional Information

Date Listed	April 8th, 2025
Days on Market	13
Zoning	Zone 24

DATA IS DEEMED RELIABLE BUT IS NOT GUARANTEED ACCURATE BY THE REALTORS® ASSOCIATION OF EDMONTON. COPYRIGHT 2025 BY THE REALTORS® ASSOCIATION OF EDMONTON. ALL RIGHTS RESERVED.Trademarks are owned or controlled by the Canadian Real Estate Association (CREA) and identify real estate professionals who are members of CREA (REALTOR®, REALTORS®) and/or the quality of services they provide (MLS®, Multiple Listing Service®)

Listing information last updated on April 21st, 2025 at 4:32pm MDT